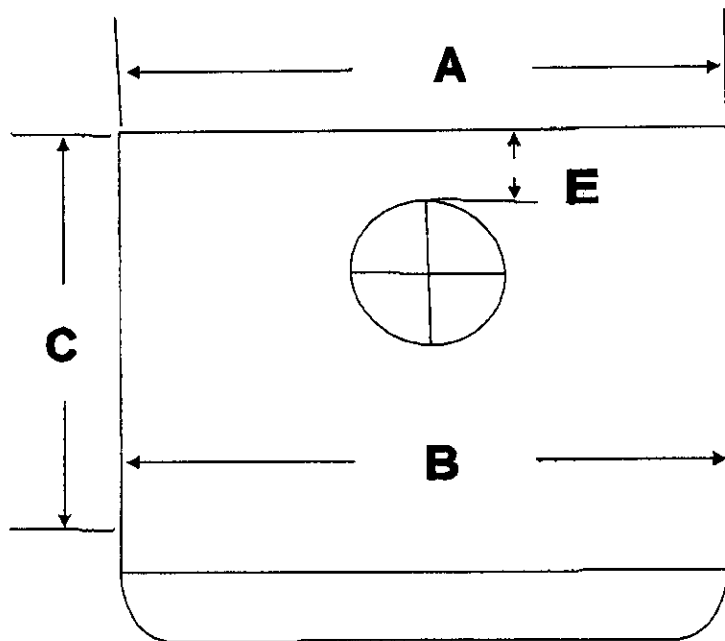


Dimensions for Insert Installations

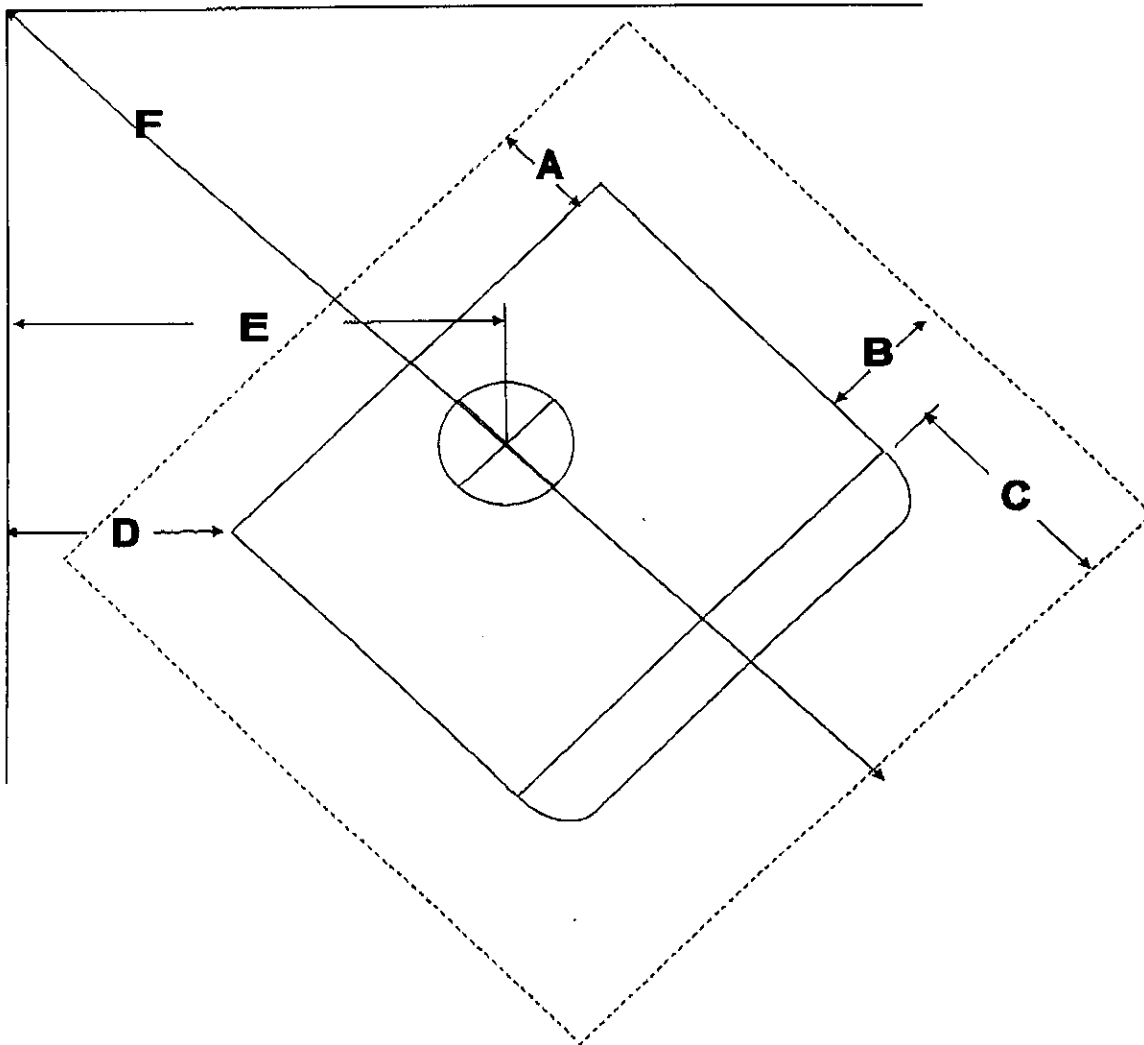


D = Height

- A = Back Width
- B = Width at maximum recess into fireplace
- C = Depth of maximum recess into fireplace
- D = Height of unit
- E = Back edge of unit to back of pipe hole
- F = Overall Depth of unit

	A	B	C	D	E	F
30CD	21-1/2"	29"	19"	19-1/2"	3"	25"
4N1XL	26-1/2"	26-1/2"	20"	22"	2-3/4"	20"
32XLBW	27-1/2"	31-3/4"	18-1/2"	22-1/2"	3-1/2"	25-1/4"
36BW	29-1/4"	34-1/4"	20"	24"	3-1/2"	22"
52BAY	24"	31-1/4"	17"	22-3/4"	3-1/2"	26-1/2"

Corner Dimensions with Approved Double Wall Smoke Pipe



	A	B	C	D	E	F	
30CD	<u>8"</u>	<u>8"</u>	<u>16"</u>	<u>8"</u>	Per Pipe	<u>65"</u>	Back width = 21-1/2"
w/ Heat Shield	6"	8"	16"	6"	Manufacturer	57"	
4N1XL	<u>8"</u>	<u>8"</u>	<u>16"</u>	<u>8"</u>	Per Pipe	<u>60"</u>	Back width = 26-1/4"
w/ Heat Shield	6"	8"	16"	6"	Manufacturer	52"	
32XLBW	<u>8"</u>	<u>8"</u>	<u>16"</u>	<u>8"</u>	Per Pipe	<u>65-1/4"</u>	Back width = 27-1/2"
		8"	16"		Manufacturer		
36BW	<u>8"</u>	<u>8"</u>	<u>16"</u>	<u>8"</u>	Per Pipe	<u>62"</u>	Back width = 29-1/4"
		8"	16"		Manufacturer		
52BAY	<u>8"</u>	<u>8"</u>	<u>16"</u>	<u>8"</u>	Per Pipe	<u>66-1/2"</u>	Back width = 24"
w/ Heat Shield	6"	8"	16"	6"	Manufacturer	58-1/2"	